

1. Woolly bud



2. Green tip

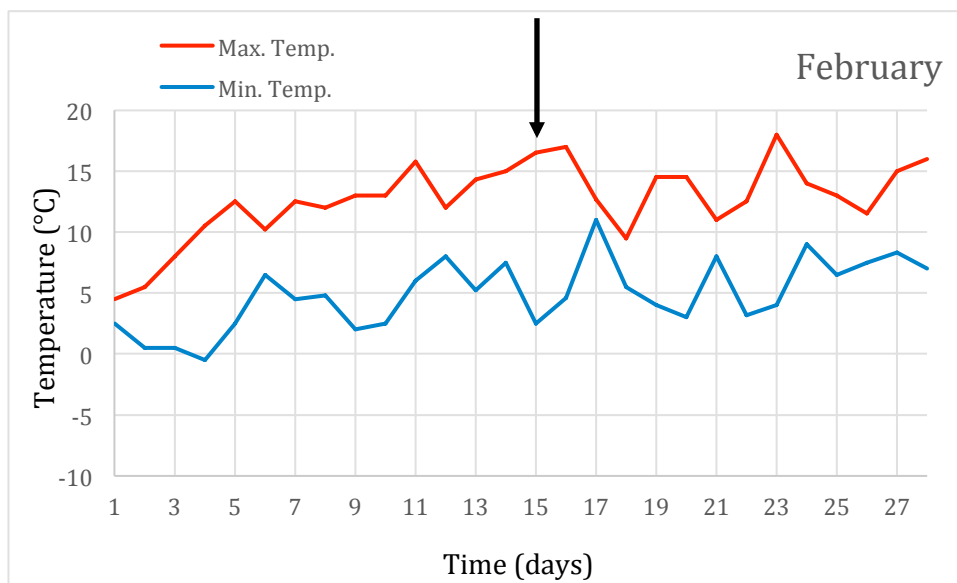
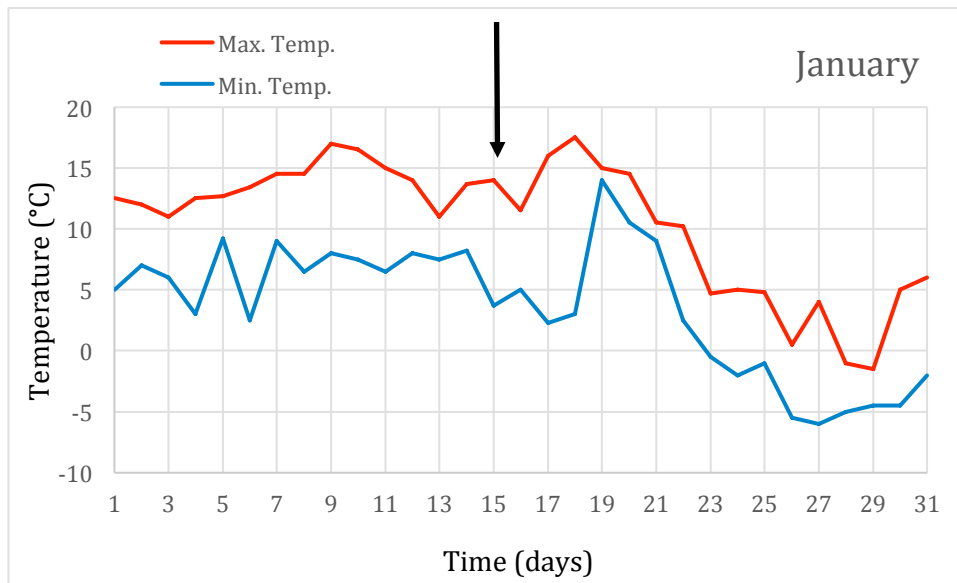


4. One or two leaves

3. Rosette of leaf tips



SUPPLEMENTARY FIGURE 1. The four different bud stages used in Figure 4, Experiment 3, as described in Coombe (1995).



SUPPLEMENTARY FIGURE 2. Daily temperatures of two winter months of Experiment 3 at bud collection time. Red curves show the maximum and blue curves the minimum at Toulouse weather station. The arrows show bud collection dates.