



Supplementary material

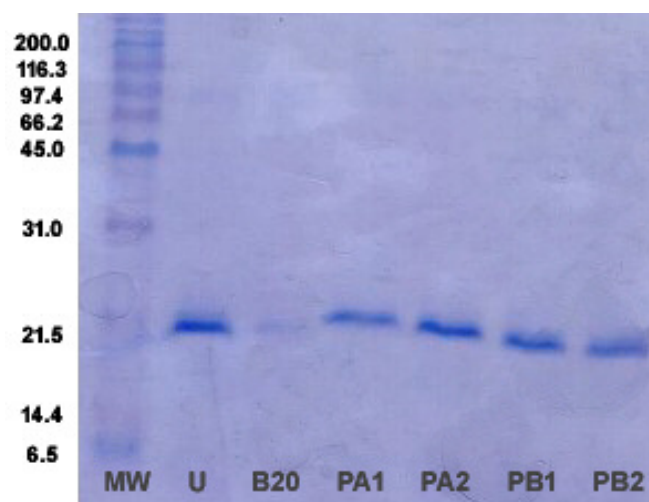
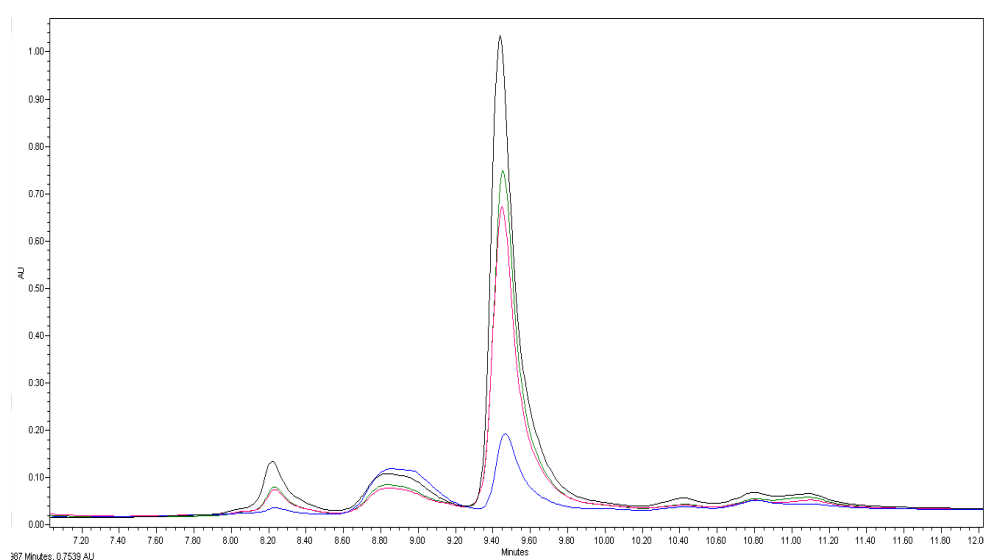


FIGURE A. Results of SDS-PAGE separation of proteins in Assyrtiko wines, before and after bentonite and protease treatment.

U: Untreated; B20: bentonite, 200 mg/L; PA1, PA2, PB1, PB2: heating + protease A and B, 1 and 2 mL/L; MW: molecular weight standard



10

FIGURE B. RP-HPLC separation of TLP in Assyrtiko wines

Black line: untreated wine; blue line: treated with 200 mg/L bentonite; green line: treated with protease A (1 mL/L); red line: treated with protease B (1 mL/L)



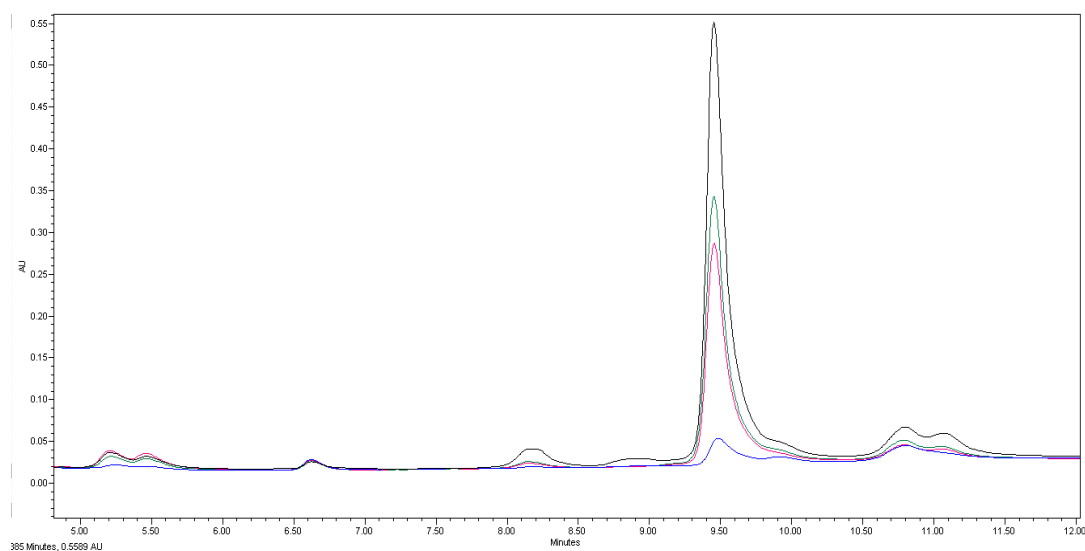


FIGURE C. RP-HPLC separation of TLP in Moschofilero wines.

Black line: untreated wine; blue line: treated with 150 mg/L bentonite; green line: treated with protease A (1 mL/L); red line: treated with protease B (1 mL/L)