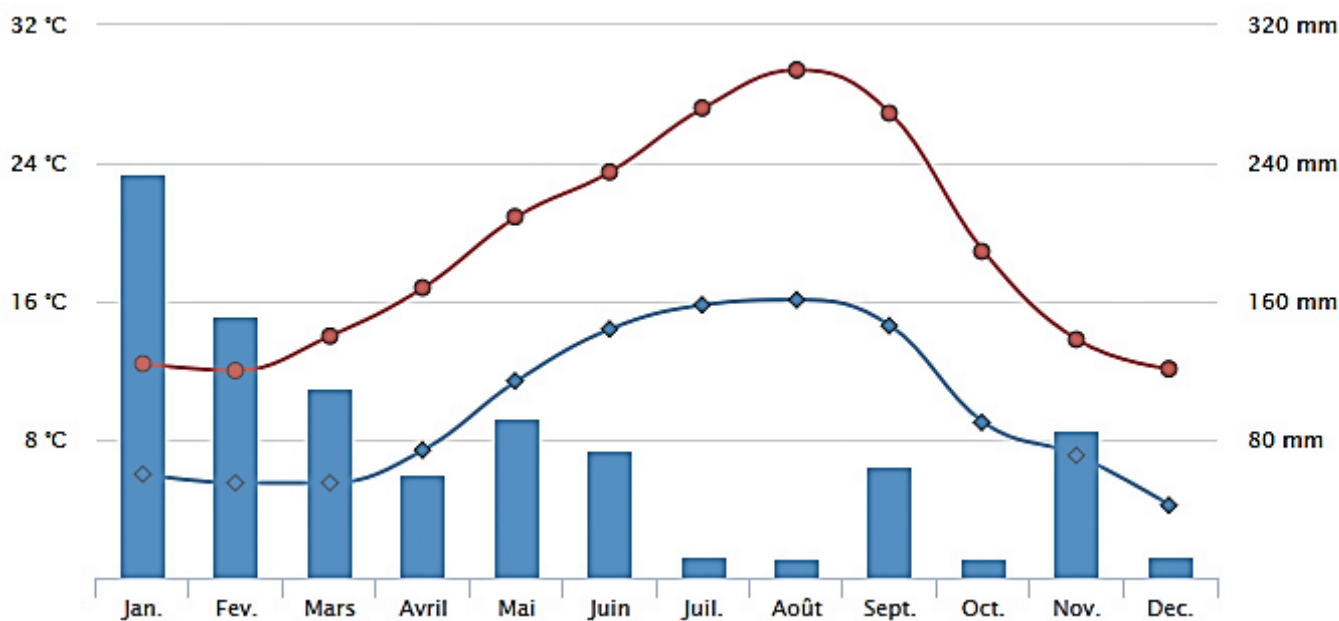
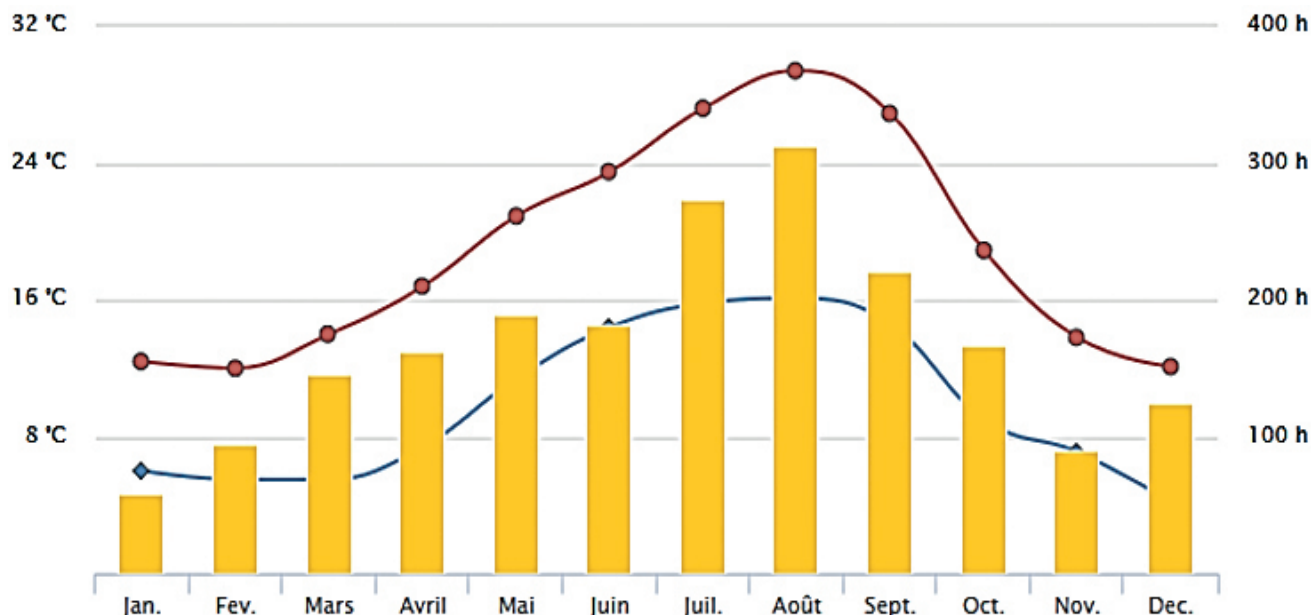


**SUPPLEMENTARY FIGURE 1A.** Climatic data of the Bordeaux area in (a) 2016, (b) 2017 and (c) 2018, according to the website [www.meteofrance.fr](http://www.meteofrance.fr)

**(a). Vintage 2016**

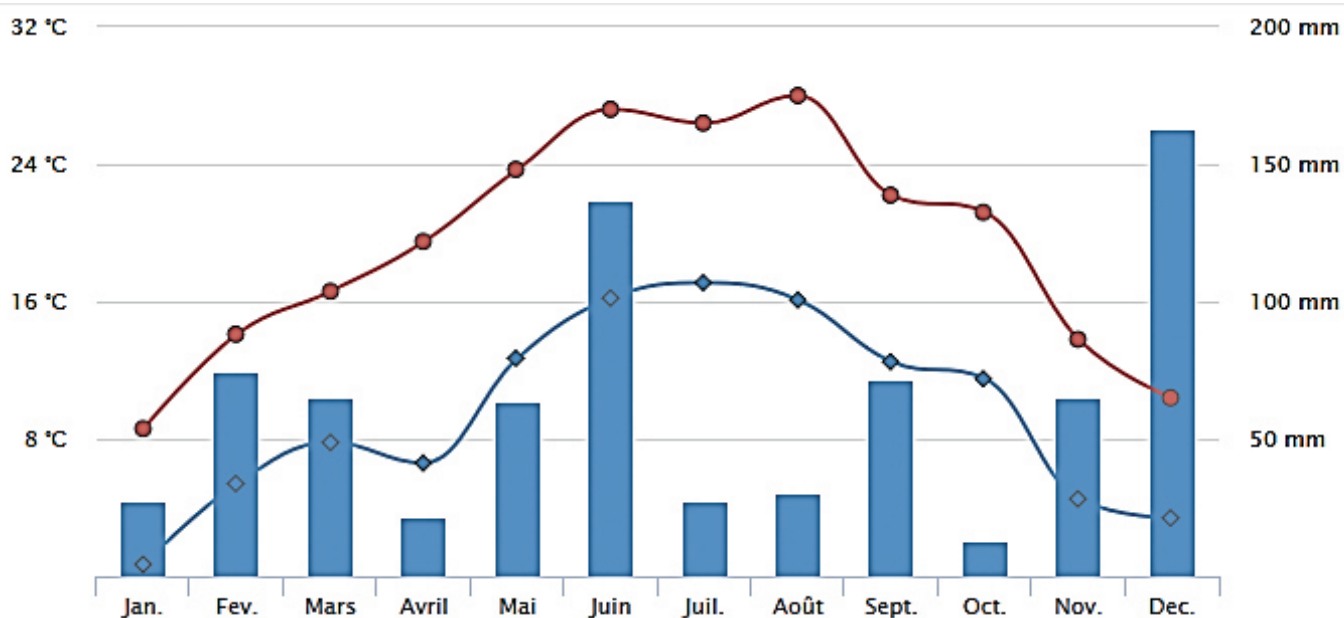
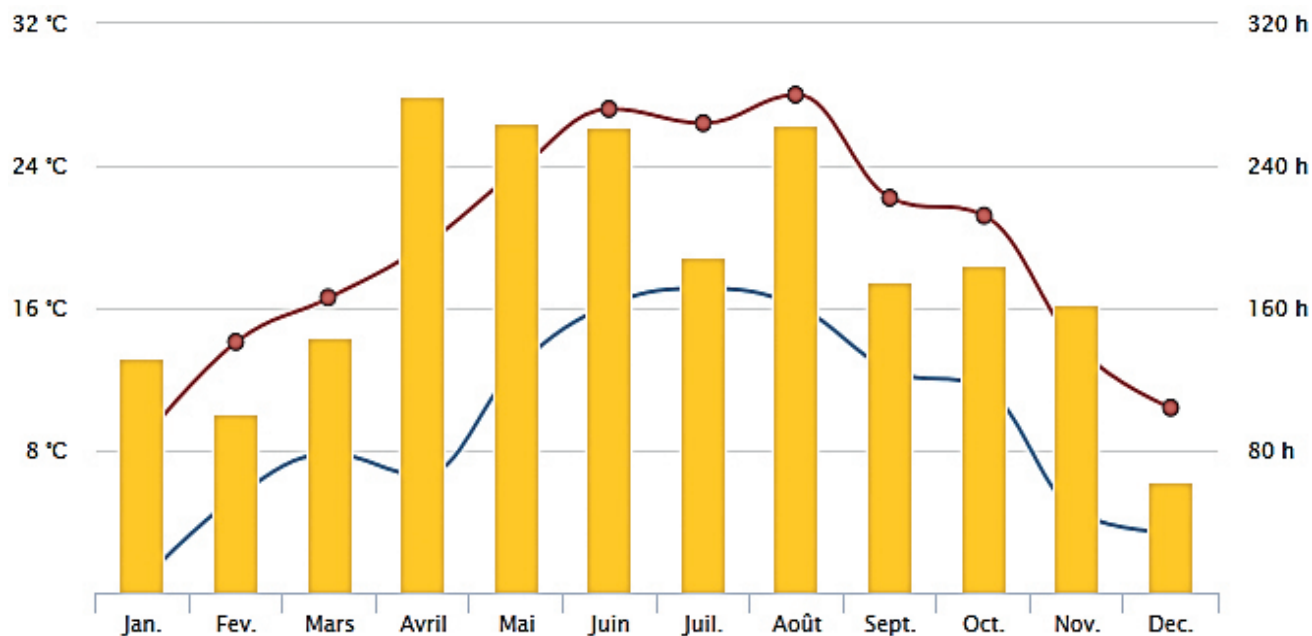


**LEGEND**

- Monthly duration of sunshine hours during 2016, in Bordeaux area
- Monthly precipitation amounts in mm, during 2016, in Bordeaux area
- Maximum monthly temperature during 2016, in Bordeaux area
- ◆ Minimum monthly temperature during 2016, in Bordeaux area

**SUPPLEMENTARY FIGURE 1B.** Climatic data of the Bordeaux area in (a) 2016, (b) 2017 and (c) 2018, according to the website [www.meteofrance.fr](http://www.meteofrance.fr)

**(b). Vintage 2017**

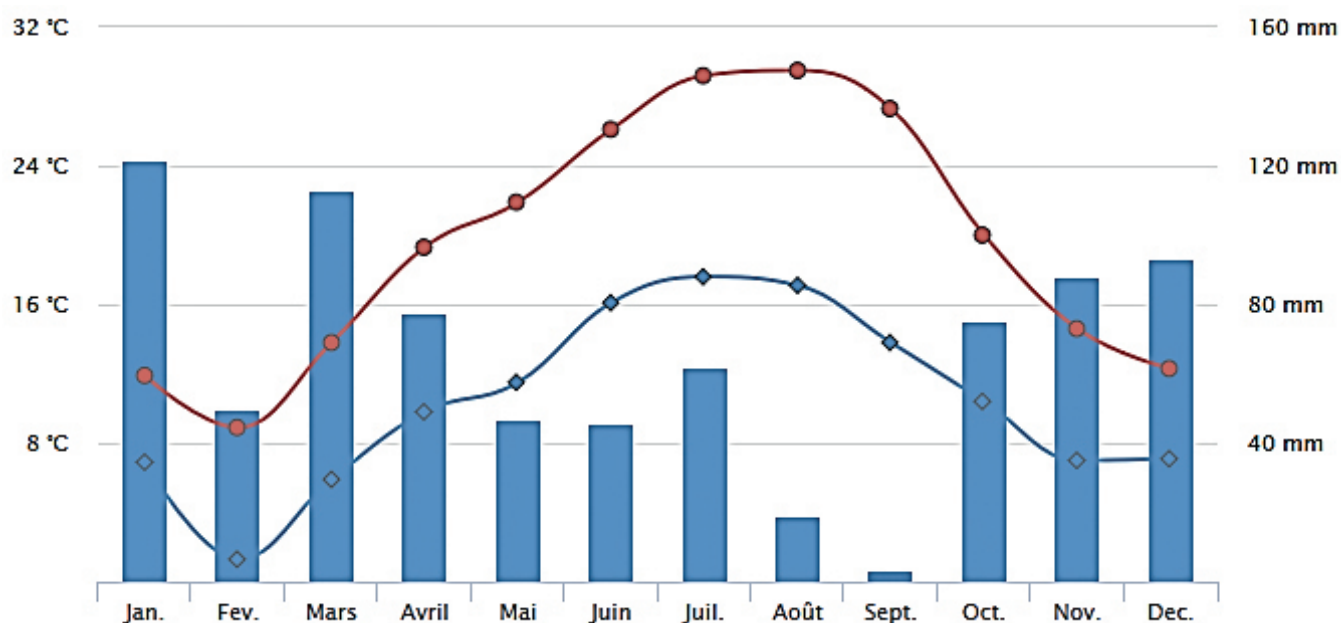
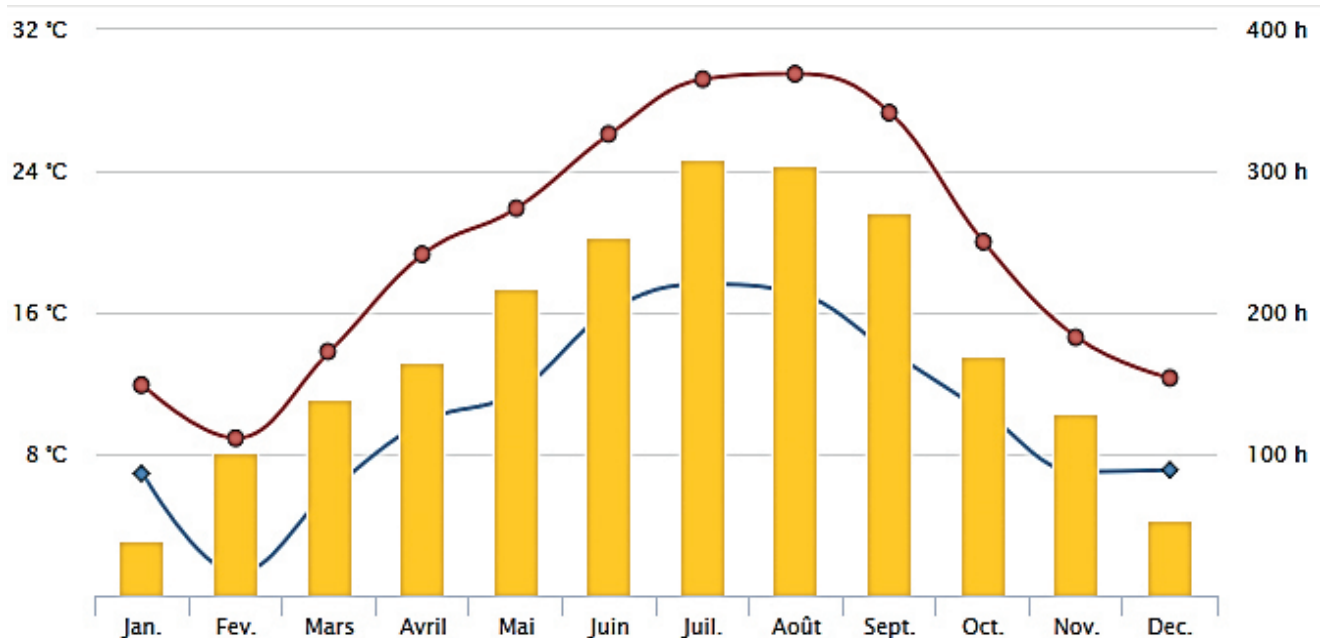


**LEGEND**

- Monthly duration of sunshine hours during 2017, in Bordeaux area
- Monthly precipitation amounts in mm, during 2017, in Bordeaux area
- Maximum monthly temperature during 2017, in Bordeaux area
- ◆ Minimum monthly temperature during 2017, in Bordeaux area

**SUPPLEMENTARY FIGURE 1C.** Climatic data of the Bordeaux area in (a) 2016, (b) 2017 and (c) 2018, according to the website [www.meteofrance.fr](http://www.meteofrance.fr)

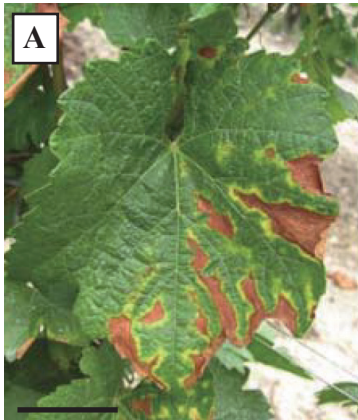
**(c). Vintage 2018**



**LEGEND**

- Monthly duration of sunshine hours during 2018, in Bordeaux area
- Monthly precipitation amounts in mm, during 2018, in Bordeaux area
- Maximum monthly temperature during 2018, in Bordeaux area
- ◆ Minimum monthly temperature during 2018, in Bordeaux area

**SUPPLEMENTARY FIGURE 2.** Scale of identified low and severe Esca-foliar symptoms (in accordance with Lecomte *et al.*, 2012). A= Low Esca-foliar symptoms; B= severe Esca-foliar symptoms



*Photo credits: P. Lecomte*  
(cv. Sauvignon blanc;  
photo scale= 2cm)



*Photo credits: P. Lecomte*  
(cv. Sauvignon blanc;  
photo scale= 12cm)



*Photo credits: C. Cholet*  
(cv. Sauvignon blanc;  
photo scale= 12cm)



**SUPPLEMENTARY TABLE 1.** Evolution of number of vine stocks and arm initially identified in 2016, and observed from 2016 until 2018 for assessment of physiological consequences of Esca and curettage.

<b>modality</b>	<b>“healthy” control</b>	<b>Young curetted</b>	<b>Old curetted</b>	<b>Low symptoms</b>	<b>Severe symptoms</b>
year	<b>2016</b>				
number of vine stocks counted	15	12	12	13	14
number of arms counted	30	22	24	23	25
year	<b>2017</b>				
number of vine stocks counted	13	12	12	12	13
number of arms counted	26	22	21	22	19
year	<b>2018</b>				
number of vine stocks counted	12	12	12	12	11
number of arms counted	24	22	21	22	18